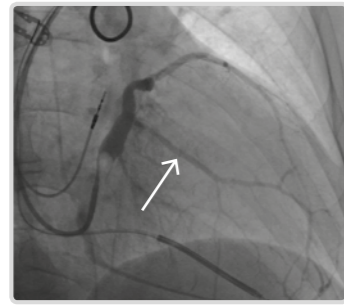


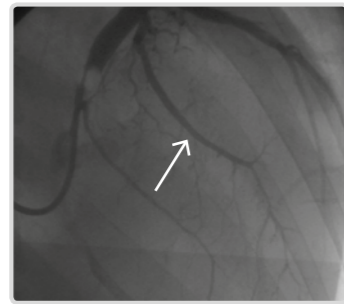
## MORE LEAD CHOICES

Different electrode spacing to accommodate individual anatomy and to help you **pace at your target location**

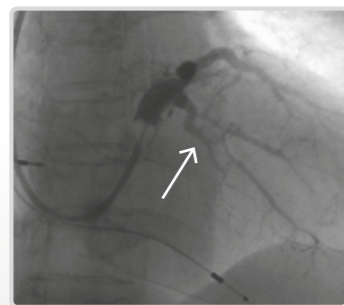
**Long Veins**  
ACUITY™ X4 Spiral L



**Short Veins**  
ACUITY™ X4 Spiral S



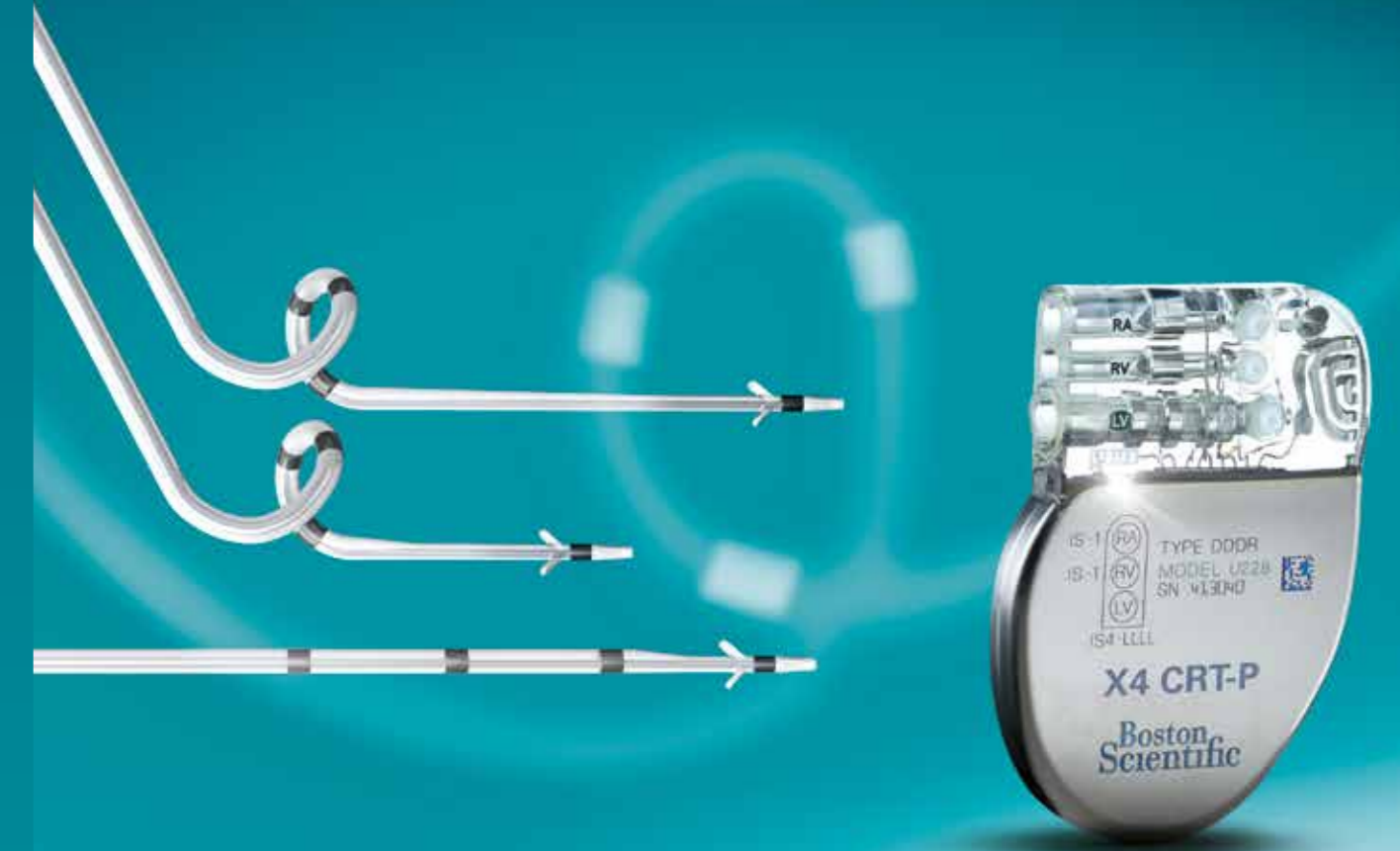
**Narrow or Tortuous Veins**  
ACUITY™ X4 Straight



What would  
be the  
benefits  
of more  
options  
in  
CRT-P?

X4

Effective  
pacing for years.



NOW IN  
CRT-P

X4

1. Boston Scientific: Physician Technical Manual – 359254-001 Ing1-2 CRT-P PTM EN Europe, to date August 2014. Boston Scientific ACUITY™ X4 Specification Sheet DINCRM0817EA MAY2013. St. Jude Medical Quartet™ <http://professional.intl.sjm.com/resources/cardiac-rhythmmanagement/leads/left-heart-leads/quartet-left-heart-lead>. Medtronic ATTAIN®, PERFORMA™ 4298 Technical Manual M948372A001B – 2012-08-09, ATTAIN® PERFORMA™ S 4598 Technical Manual M950705A001B – 2012-08-09, ATTAIN® PERFORMA™ STRAIGHT 4398 Technical Manual M948374A001B – 2012-08-09  
2. Huzair J, Kaszala K, Koneru J, et al. Disparity in Left ventricular stimulation among different pacing configurations in cardiac resynchronization therapy. Circulation 2012.  
3. Boston Scientific: Physician Technical Manual – 359254-001 Ing1-2 CRT-P PTM EN Europe. Medtronic: VIVA™ CRT-P C5TR01, p. 358. St. Jude Medical: [http://professional.sjm.com/sitecore/content/professional/resources/cardiac-rhythm-management/cardiac-resynchronization-therapy-crt-devices/crt-pacemaker/Biotronik: Epyra 8 HFT, eGA-HW\\_403988-D Epyra \(ProMRI\) p. 35](http://professional.sjm.com/sitecore/content/professional/resources/cardiac-rhythm-management/cardiac-resynchronization-therapy-crt-devices/crt-pacemaker/Biotronik: Epyra 8 HFT, eGA-HW_403988-D Epyra (ProMRI) p. 35)

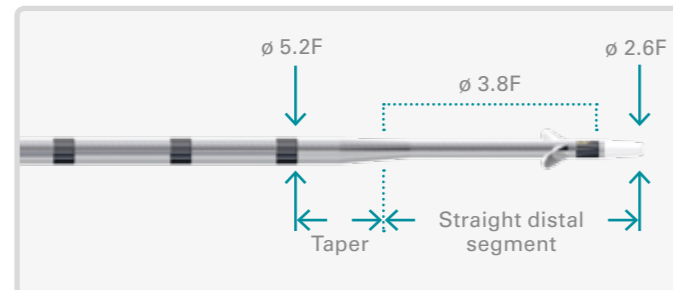
All cited trademarks are the property of their respective owners.  
Information not intended for distribution in France.

CAUTION: Law restricts these devices to sale by or on the order of a physician. Indications, contraindications, warnings and instructions for use can be found in the product labelling supplied with each device. Information for the use only in countries with applicable health authority product registrations. CRM-269401-AA SEP2014 JUN 2014. Printed in the UK by De Budelse/Gosling.

## EASE OF IMPLANT

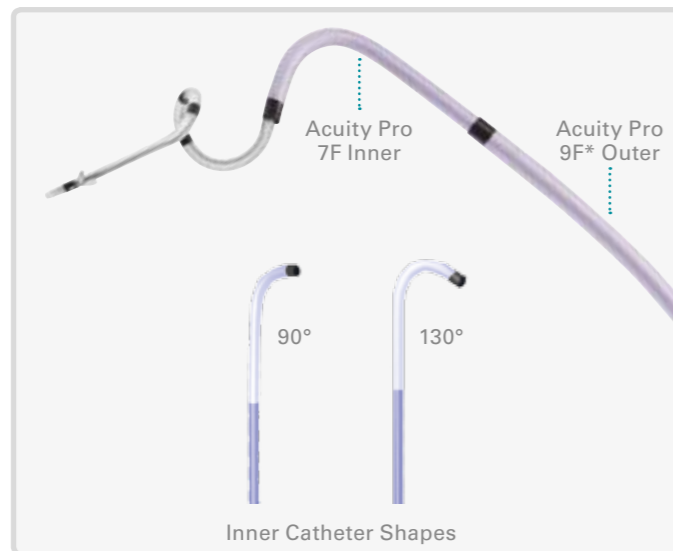
### Industry's Smallest Lead Tip<sup>1</sup>

Tapered 2.6F\* tip to aid deliverability in small and tortuous branch vessels.



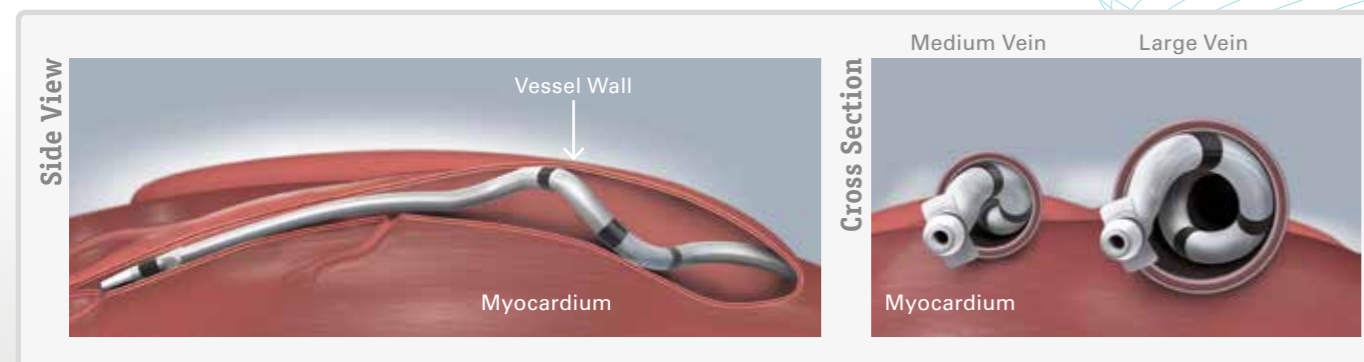
### Inner Catheter Delivery

Direct delivery of ACUITY™ X4 lead in the targeted branch through the 7F ACUITY™ PRO inner catheter.



### 3D Spiral with Multiple Electrodes

Electrodes positioned on a 3D spiral optimize stability and electrode contact with the myocardium, minimizing pacing capture thresholds in a non-apical location.

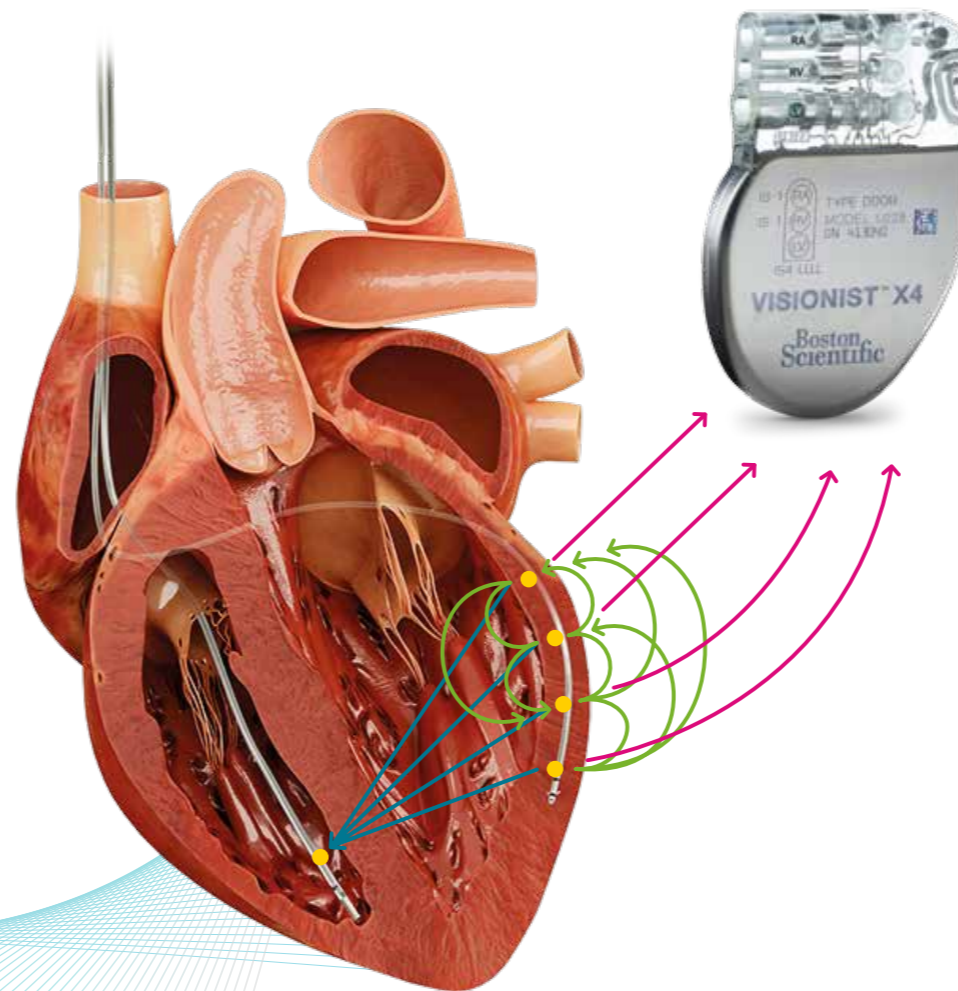


## MORE PACING VECTORS

The VISIONIST™ X4 CRT-P System offers **17 vectors**, for maximum flexibility when choosing lead position.

- 9 Bipolar
- 4 Extended Bipolar
- 4 Unipolar

- ✓ Lower pacing thresholds compared to bipolar configurations<sup>2</sup>
- ✓ Reduced risk of anodal stimulation in the ventricle
- ✓ Additional vectors for management of phrenic nerve stimulation



## BEST LONGEVITY<sup>3</sup>

Boston Scientific's new VISIONIST™ X4 CRT-P brings the industry's longest-lasting CRT-P battery technology with a 1.6 Ah battery capacity, resulting in exceptional longevity.

- ✓ Efficient Circuitry
- ✓ Biggest Battery Capacity

- ✓ Industry-leading Longevity  
DDDR 70, pacing 15% A 100% BiV, 2.5V A&V, 3.0V LV, 500ohm

10.3 years



## CONVENIENCE

### Atrial Arrhythmia Report

Allows automatic screening of AF, enabling physicians to initiate treatment earlier and potentially prevent strokes.

### Post Operative System Test (POST)

Is designed to provide an **automatic system evaluation** (lead impedances, intrinsic amplitudes, capture thresholds) after implant, minimizing the need for a manual check and improving workflow.



X4

\*2.6F = 0.86mm 7F = 2.33mm 9F = 3mm