

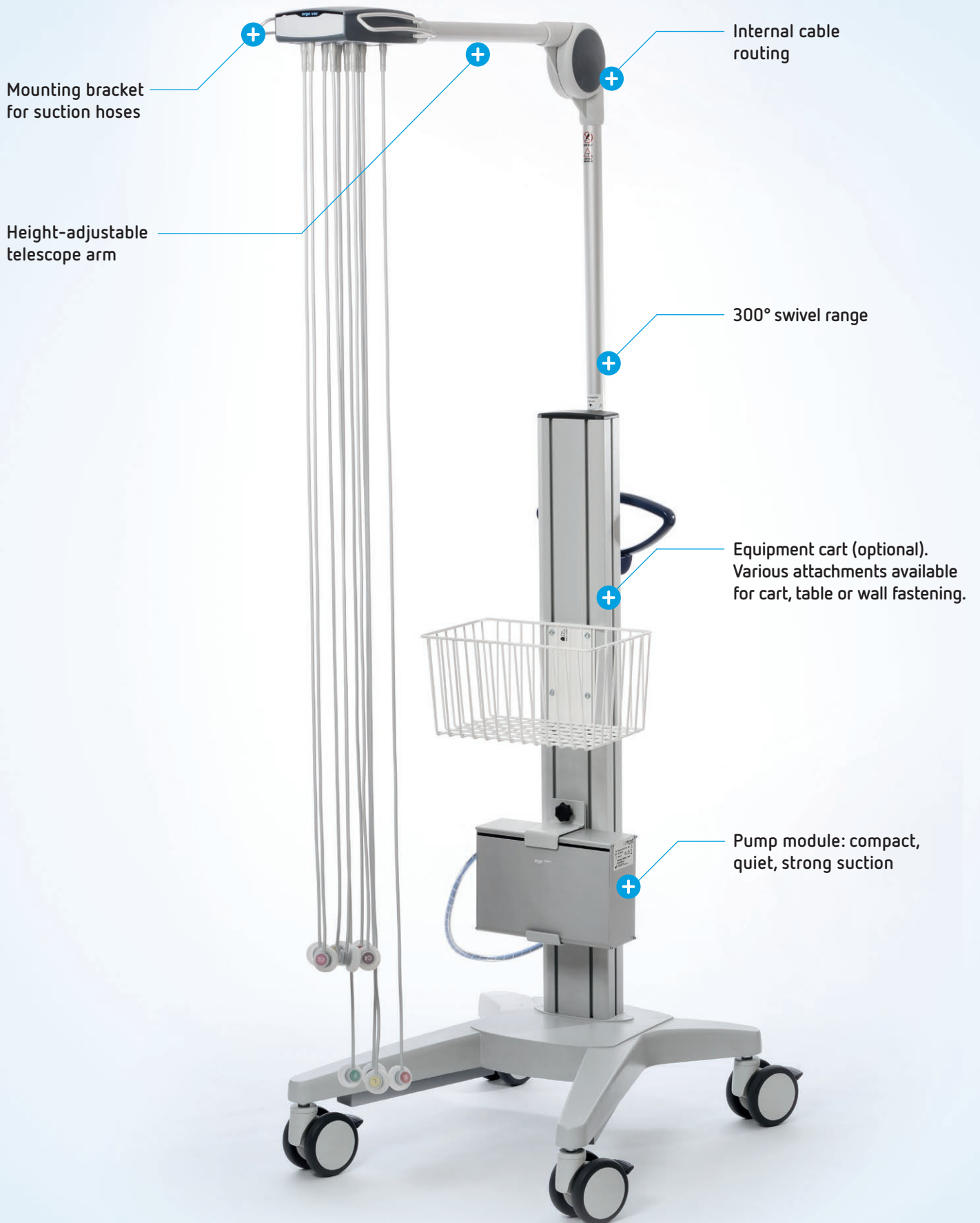
ECG vacuum

# *ergo vac*

The new ECG vacuum  
(incl. *ergo vac<sup>LT</sup>*)



10  
lead

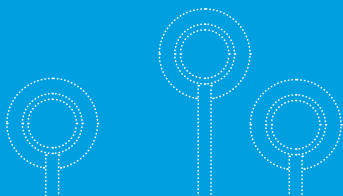


# ergo vac

Fast. Convenient. Easy to use.

You can carry out resting and exercise ECG measurements quickly and conveniently with the *ergo vac* (including *ergo vac<sup>LT</sup>*) suction electrodes. The *ergo vac* is suitable for all types of ECG equipment and can be fastened to various cart systems.

If required, we also offer customer-specific fastenings. There is also a blow-out function on the *ergo vac* to blow out moisture and impurities.



Cable arm ergo vac<sup>LT</sup>

## The powerful features of the *ergo vac* are impressive



### Fast. Convenient. Easy to use.

*ergo vac* is currently the quietest and most innovative suction device with a hygienic blow-out function. Network or battery operation (option) possible.



### Very simple to operate

The device is operated by using only four keys. LED displays the status. The vacuum power can be adjusted in five settings ranging from 80 to 220 mbar.



### Excellent signal quality

*ergo vac* has a very good signal quality for 10 leads.



### Simply hygienic

There is a blow-out function on the *ergo vac* to blow out moisture and impurities.



### Universal use

*ergo vac* can be used flexibly.



### Electrode cables

The cable assemblies have silver/silver chloride electrodes with soft silicon suction domes.



### Cable arm ergo vac<sup>LT</sup>

The special feature of the cable arm is a hidden cable guide as well as a swivel arm. The head part can be moved flexibly.



### Comprehensive user guide

A comprehensive user guide with operating instructions, safety information and practical tips is supplied with the *ergo vac* suction unit.

## Technical data

### Pump module

<b>Dimensions</b>	245 × 175 × 82 mm
<b>Weight</b>	2.4 kg / 3.5 kg (without / with accumulator)
<b>Power supply</b>	100 – 240 VAC
Power consumption	30 VA
Fuse	2x T1.6 A/250 V
<b>Battery (optional)</b>	LiFePO4 accumulator
Lifetime	approx. 800 charging cycles
Time to charge to 100%	approx. 3.5 hours
Charging duration during operation	approx. 3.5 hours
<b>Ambient conditions</b>	
Operating temperature	10 – 50 °C, storage 10 – 40 °C
Relative air humidity	30 – 75% (not condensing)
Air pressure during operation	700 – 1,060 hPa
<b>Low pressure</b>	0 – 500 mbar
<b>Airflow</b>	0 – 5.5 l/min

### Patient module

<b>5 vacuum levels</b>	100, 150, 180, 210, 250 mbar
------------------------	------------------------------

### System cable

<b>System cable</b>	1.9 m
<b>ECG connection</b>	15-lead, in accordance with IEC Standard norm
<b>Control cable</b>	1.5 m
<b>Hose</b>	1.5 m

### Electrodes

<b>Material</b>	Sintered Ag/AgCl, silicone suction cup
-----------------	--

### Cable arm

*ergo vac*                      *ergo vac<sup>LT</sup>*

<b>Length</b>	800 – 1100 mm	505 – 945 mm
<b>Range of height adjustment</b>	1000 – 2000 mm	835 mm
<b>Pivot range</b>	300°	270°

### Safety standards

<b>Safety standard</b>	Unit as System Class I in accordance with IEC/EN 60601-1
<b>EMC</b>	IEC/EN 60601-1-2
<b>Conformity/Classification</b>	CE/I in accordance with EC Directive 93/42/EC
<b>Protection</b>	This device is not designed for outdoor use (IPX0)



**mbnet**  
engineering

mbnet Engineering GmbH  
Kirschauer Str. 37a  
OT Callenberg  
02681 Schirgiswalde-Kirschau  
Germany  
Phone +49 35 92 34 830 and 54 25 47  
Fax +49 35 92 34 344 and 54 25 49  
verkauf@mbnet.de  
www.mbnet.de